



# Welsh House Farm School News

Issue  
112

*'Inspired to grow and flourish'*

Dear Parents/Carers,

Well another academic year comes to close! We have successfully navigated our way through challenges and celebrated many successes this year. I remain steadfast in my opinion that our school is AMAZING! Our pupils, parents, staff and governors all remain committed to making the most out of every school day here at Welsh House Farm. Our school is calm, friendly and a place where pupils can feel safe and learn. I am truly blessed to be the Headteacher at this school and wanted to thank all of you for making WHF the place it is. I hope you all have a lovely Summer break, and as always, I look forward to welcoming you all back in September.

Kindest regards,  
Mrs Jay

## Staffing Update

As we know we have had a few staff changes this year and we sadly have to officially say a goodbye to Miss Arissa and Mrs Bates this year.

We officially welcome Miss Batsford to the team as our new Y1 teacher and Miss Peacock as our cover teacher.

We say a massive well done to Mr Harborne and Miss Taylor who joined us this year and are doing a great job.

Mrs Smith has done an amazing job covering Y1 in Miss Arissa's absence and we can not thank her enough! She is a superstar.

Finally, I also wanted to mention the great long term supply RB teaching assistants, external French teacher and external sports and music specialists who have worked so well with us all year.

## DATES TO REMEMBER

Monday 22nd July 2024—Teacher training day

Monday 2nd September 2024— Teacher training day

Tuesday 3rd September 2024— School reopens for children



@WHF\_School



Welsh House Farm



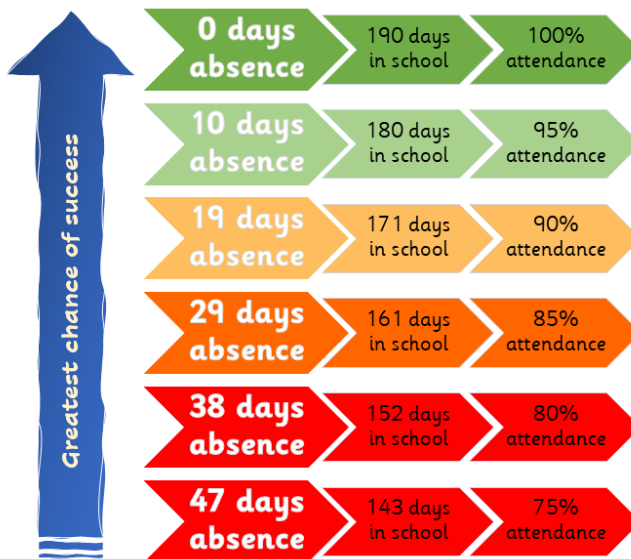
## Gold Book Awards

‘Inspired to grow and flourish’

<u><b>RB</b></u> <b>Kiara &amp; Landon</b>	<u><b>Reception</b></u> <b>Raman &amp; Deborah</b>
<u><b>Year 1</b></u> <b>Keida &amp; Vera</b>	<u><b>Year 2</b></u> <b>Keith &amp; Rodrigo</b>
<u><b>Year 3</b></u> <b>Joshua &amp; Taliyah</b>	<u><b>Year 4</b></u> <b>Bryan &amp; J'Ziyah</b>
<u><b>Year 5</b></u> <b>Elliyah</b>	<u><b>Year 6</b></u> <b>Milika &amp; Danyal</b>
<u><b>Head Teacher</b></u> <b>Zekhethelo &amp; Asher</b>	<u><b>P.E</b></u> <b>Delina &amp; Dawa</b>



## Attendance



**Our winning class last week was Yr 2 with 93.9%**  
**Our winning class this week was Yr 2 with 95.3%**

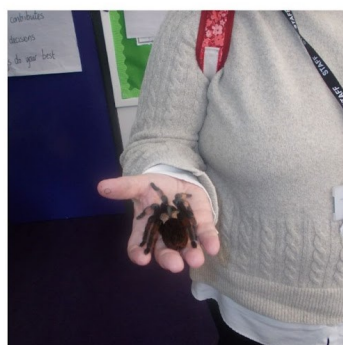
## Class attendance for the whole year

**Nursery - 92%**  
**Reception - 89%**  
**RB - 94%**  
**Year 1 - 95%**  
**Year 2 - 94%**  
**Year 3 - 90%**  
**Year 4 - 94%**  
**Year 5 - 91%**  
**Year 6 - 92%**

## Year 5

Issue  
112

*'Inspired to grow and flourish'*



**During the Spring term, Year 5's topic was all about the rainforest. We had a workshop with Dave, who has visited the rainforest and its tribes many times. We learned all about the way of life for the people who live in the rainforest, and we got to meet some animals that are usually found in that habitat.**



@WHF\_School



Welsh House Farm

## Reception

Reception were very excited to receive their 'Passports to Year 1' this week and spend time in their new classroom.

They have also been practicing meditation and yoga for calming time.



## PE

This week the students have met  
Joel Fearon a Olympic star  
and cricket star Moheen Ali.



## Year 2

This year has flown past and we have worked so hard. We have had some amazing trips and experiences including Great Fire of London Day, Virtual Reality sessions in Australia and animals around the World. Plus a visit to the Mosque and Warwick Castle as well as a Lego morning. The class has had fun, gained lots of memories and completed a lot of hard work- see you in Year 3 for more lovely memories together.



## Year 3

Issue  
112

Year 3 have had a fantastic year. They really enjoyed their trip to Pizza Express to make Pizza as part of their geography topic about Italy during the Spring term



*'Inspired to grow and flourish'*



@WHF\_School



Welsh House Farm

## Nursery

Issue  
112

*'Inspired to grow and flourish'*



**Nursery have had a fantastic last week! We had our Nursery Graduation and the children performed amazingly. We were very proud! We also had our Sports Day Event that the children joined in with, and we all had a great time. Well Done Nursery.**





**RB**

**RB enjoyed watching a cricket match at Edgbaston Cricket ground.**



**RB (and some of Year 4) had a wonderful time exploring a farm in Worcestershire.**



## Year 4

Issue  
112

*'Inspired to grow and flourish'*



**Year 4 have learned to play the ukulele this year. They finished the year with a special assembly performance for their parents and Years 1 - 6. They played five different songs with great rhythm and confidence.**



@WHF\_School



Welsh House Farm

## Year 6

Issue  
112

**Year 6 had a fabulous time horse riding over the past 2 weeks at Hole Farm.**

*'Inspired to grow and flourish'*



@WHF\_School



Welsh House Farm

# IMPORTANT

## Welsh House Farm Community School's Parental Code of Conduct

Welsh House Farm Community School believes in respecting, valuing and caring for each member of the school community. Therefore, we believe Welsh House Farm Community School should be a safe and protective environment for all children, staff and parents. Consequently, the aim of the Parental Code of Conduct is to ensure that all members of the school community treat each other with respect in order to support the positive ethos of the school.

### Parental Guidelines

In order to support a peaceful and safe school environment the school will not tolerate parents, carers or visitors exhibiting the following:

- Any inappropriate behaviour on the school premises.
- Using loud or offensive language or displaying temper.

### How the school will respond to unacceptable behaviour and conduct

Welsh House Community School reserves the right to take any necessary actions to ensure all members of the school community are not subject to abuse. Therefore the school will take the following actions if we feel any behaviour is deemed abusive:

- Should anyone exhibit any of the behaviours mentioned in parental guidelines; then the school will contact the appropriate authorities.
- The school also reserves the right to ban the offending adult from the school premises.



## Children's Speech and Language Therapy Mainstream Schools

### Information for Families



There is a Speech and Language Therapist from Birmingham Community Healthcare NHS Foundation Trust working with your child's school.



The Speech and Language Therapist works with the school to support children's speech, language, and communication.



The Speech and Language Therapist may talk to your child's teachers or the school SENCO about your child, observe your child in class and offer advice to support your child. School will ask for your consent for this to happen.



School will ask for your consent if your child needs a Speech and Language Therapy assessment or ongoing support.



If you have any questions, please ask to talk to the school SENCO. If you would like Speech and Language Therapy advice, please phone the advice line on 0121 466 6231.

**A warm place of welcome in Quinton :**  
**Monday: 10-2pm**  
**Thursday: 12-2pm**  
**Friday: 10-2pm**  
**Saturday 5-7pm**  
**warm drinks, snacks & a friendly face**  
**\*signposting and support**  
**\*providing a range of budget cooking courses for all ages**  
**\*volunteering opportunities!\***

## # Parents worried about mental health

New findings from Parentkind's #ParentVoiceReport2021 show that many parents are concerned about a range of mental health issues their children experience in schools, including exam stress, bullying and anxiety.

Find out more here: <https://bit.ly/3DN8zWM>

## Action for children

Advice and activities to support children and parents with their mental health and emotional wellbeing.

<https://parents.actionforchildren.org.uk/>

The Waiting Room - Health and Wellbeing services at your finger tips – Birmingham & Solihull TWR provides an alternative approach to taking control of our own health and well-being. It is a virtual bridge across “The Information Chasm” that connects support services to the recipient almost inthe-waitingroom.org

<https://the-waitingroom.org/>

## Route 2 Wellbeing Birmingham

Welcome to route2wellbeing Birmingham – the definitive guide to local voluntary and community health and care services in Birmingham. Route2wellbeing makes it easy to find local services and activities that promote good health and wellbeing.

<https://r2wbirmingham.info/home>



Iss1e  
112

*'Inspired to grow and flourish'*

## Arbor Parent Portal and App

Next week you will be sent a link to sign up to the Arbor Parent Portal and App. This will be new way of communicating with the school, updating your child's information and much more.

Look out for a letter that will be sent out soon with more details.

## Your local pantry



• **Quinton** •

**Your Local Pantry Quinton every**

**Monday:12pm-2pm**

**Friday: 10am-2pm**

Membership required.

£5 per shop

1 shop per week

0121-725-8268



Dignity, Choice, Hope



[www.yourlocalpantry.co.uk](http://www.yourlocalpantry.co.uk)



@WHF\_School



Welsh House Farm





# Parents Page

Iss1e  
112

*'Inspired to grow and flourish'*

## Welsh House Farm Big Local

# Craft and Chatter Club

Come and enjoy some knitting, crocheting, crafts, painting, drawing any creative activities, meet new people or just chat over a coffee or cuppa in a safe space.

Time: 10am - 12noon every Monday

For more information

Contact: Dadirai Tsopo - 07732679066

**ATTENDANCE IS TOTALLY FREE!!**

Venue :

Keystone Children's Centre,  
Purbeck Croft, Harborne, Birmingham, B32 2NL



Local Trust Big Local

COMMUNITY FUND



@WHF\_School



Welsh House Farm

## WELSH HOUSE FARM WARM SPACE AND COFFEE MORNINGS



Every Monday morning from 10:00 am - 11:30 am



### FREE TO ACCESS

Hot and cold refreshments  
Gadget charging station  
Secure Wi-Fi access



Quinton Food bank referral  
Harborne councillor drop in surgery  
Community information signposting

### ALL ARE WELCOME

Keystone Children Centre Purbeck Croft, Harborne , B32 2NL  
Contact: [welshhousefarmcommunity@gmail.com](mailto:welshhousefarmcommunity@gmail.com)  
0121 427 4193

Local Trust | Big Local



@WHF\_School



Welsh House Farm

Issue  
112

'Inspired to grow and flourish'



Edgbaston District



DLP  
DEVELOPING LOCAL  
PROVISION



Let's play and learn together...

# Stay and Play

Wednesday 1.00-2.30pm

(term time only from **18.1.2023**)

Quinborne Community Centre

Ridgacre Road, Quinton,

Birmingham. B32 2TW



Limited spaces! To book your **Free** place

**Call us: 07510005044**



@WHF\_School



Welsh House Farm



# Parents Page

## News from the local foodbanks

Issue  
112

*'Inspired to grow and flourish'*

We have some important updates to share with you regarding our operations at Quinton and Oldbury Foodbank. As you know, we have been (currently ) operating out of 2 distribution centres:

- St Boniface Church, Quinton Road West, Birmingham, B32 2QD
- The Coffee Shop, 151 Castle Road, Oldbury, B68 0EL

Our trustees and steering group, with guidance from Trussell Trust staff have been reflecting on our operations at both centres and have decided to make changes in how we operate. We believe these changes are needed to streamline our work and make our Food Bank more efficient and effective at serving our community.

**St Boniface Church** - We are continuing to operate our Wednesday Food Bank sessions at St Boniface on Wednesdays from 11am-1pm. We have seen significant increase in demand at St Boniface. In response to this, we will be launching an additional weekly session every Tuesday from 10am-12pm, starting from the 6th September.

**The Coffee Shop** - The Friday Food Bank session is stopping at this site on 26th August. The local demand for the provision of crisis food parcels has always been less than at St Boniface and the management of food donations and volunteer teams across 2 centres has been demanding. The physical layout of the Coffee Shop has presented us with additional difficulties to do with privacy and offering further support to Food Bank clients. However, the Coffee Shop is being re-launched as "**Brandhall Community Hub**" and will offer a variety of support to the local community. This will include a Local Pantry, a food membership club giving access to low-cost food, including fresh goods, in a shop format. The Local Pantry will work in partnership with the Food Bank to be another way to support local people in a managed way, allowing households to budget for the food they need. To help ensure that everyone who needs food aid support in the Brandhall area, we will be supplying emergency pre-packed parcels at the Coffee Shop on Friday, until the Local Pantry is launched. We will have information about the Local Pantry and how to become a member ready in September.

**The nearest food banks in the Trussell Trust network to the Hub include:**

1. Quinton and Oldbury Foodbank, St Boniface Church, B32 2QD (1 mile)
2. Smethwick, Holy Trinity Church B67 7AH (2 miles)
3. Handsworth, New Wesleyan Church, B21 0LA (3 miles)
4. Birmingham Central, Birmingham City Church, B1 3QQ (4 miles)



@WHF\_School



Welsh House Farm